

ARES BOX

gaviota
Sun Life Specialist

- *Box system with front folding of Premium extendible arms, enabling the covering of areas of up to 18 m².*
- *Beautiful design*
- *Easy to install*



MAXIMUM DIMENSIONS CLASS 2	
Without central support	5,00 line x 3,00 projection (m)
With central support	6,00 line x 3,00 projection (m)

Standard EN-13561

Resistance - 14000 cycles



EN-13561:2004 Ábaco de resistencia al viento • Wind resistance selection abacus • Abaque de résistance au vent • Abaco resistenza al vento									
2,00	2,50	3,00	3,50	4,00	4,50	5,00	5,50	6,00	L / S
Clase 3	Clase 3	Clase 3	Clase 3	Clase 3	Clase 3	Clase 3	Clase 2*	Clase 2*	1,50
IM	Clase 3	Clase 3	Clase 3	Clase 3	Clase 3	Clase 3	Clase 2*	Clase 2*	1,75
IM	Clase 3	Clase 3	Clase 3	Clase 3	Clase 3	Clase 3	Clase 2*	Clase 2*	2,00
IM	IM	Clase 3	Clase 3	Clase 3	Clase 3	Clase 3	Clase 2*	Clase 2*	2,25
IM	IM	Clase 3	Clase 3	Clase 3	Clase 3	Clase 2	Clase 2*	Clase 2*	2,50
IM	IM	IM	Clase 2	Clase 2	Clase 2	Clase 2	Clase 2*	Clase 2*	2,75
IM	IM	IM	Clase 2	Clase 2	Clase 2	Clase 2	Clase 2*	Clase 2*	3,00

EN-1933:1999
Resistencia al embolsamiento de agua Resistance to water retention Résistance au ramassage d'eau Resistenza all'accumulo di acqua
Clase 2

Resistencia al Viento • Wind Resistance • Résistance au Vent • Resistenza al Vento		
Clase • Class Clase • Classe	Velocidad Máxima Viento • Maximum Wind Speed Velocità Massima Vento • Velocità Massima Vento	Presión • Pressure Pression • Pressione
1	28 Km/h	40 N/m ²
2	38 Km/h	70 N/m ²
3	49 Km/h	110 N/m ²

* Montado con soporte central
* Mounted with central support
* Montage avec support central
* Montato con supporto centrale

Options:

- **Motor:**
 - Box motor (Gaviota Cross Box)
 - Manual override (Gaviota GSM or radio GSM)

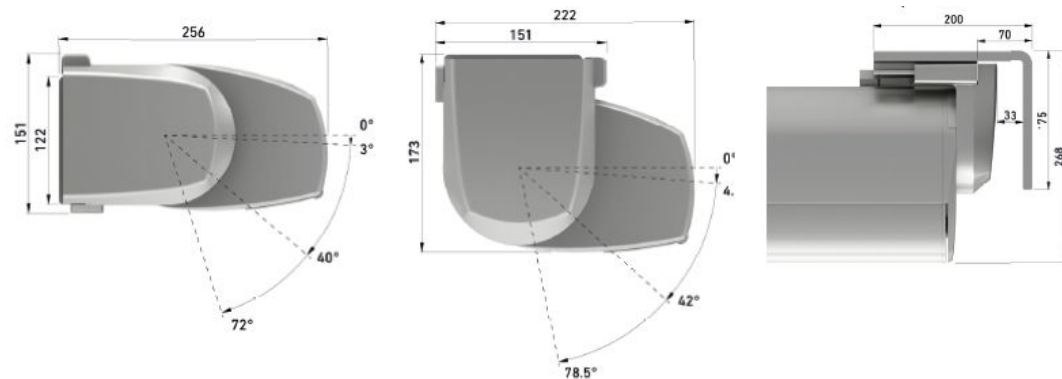
Possibility of motor changing without disassembling the awning

- **Gear**



Installation:

- To wall - inclination: 3°-72°
- To ceiling - inclination: 4,5°-78,5°
- Between walls



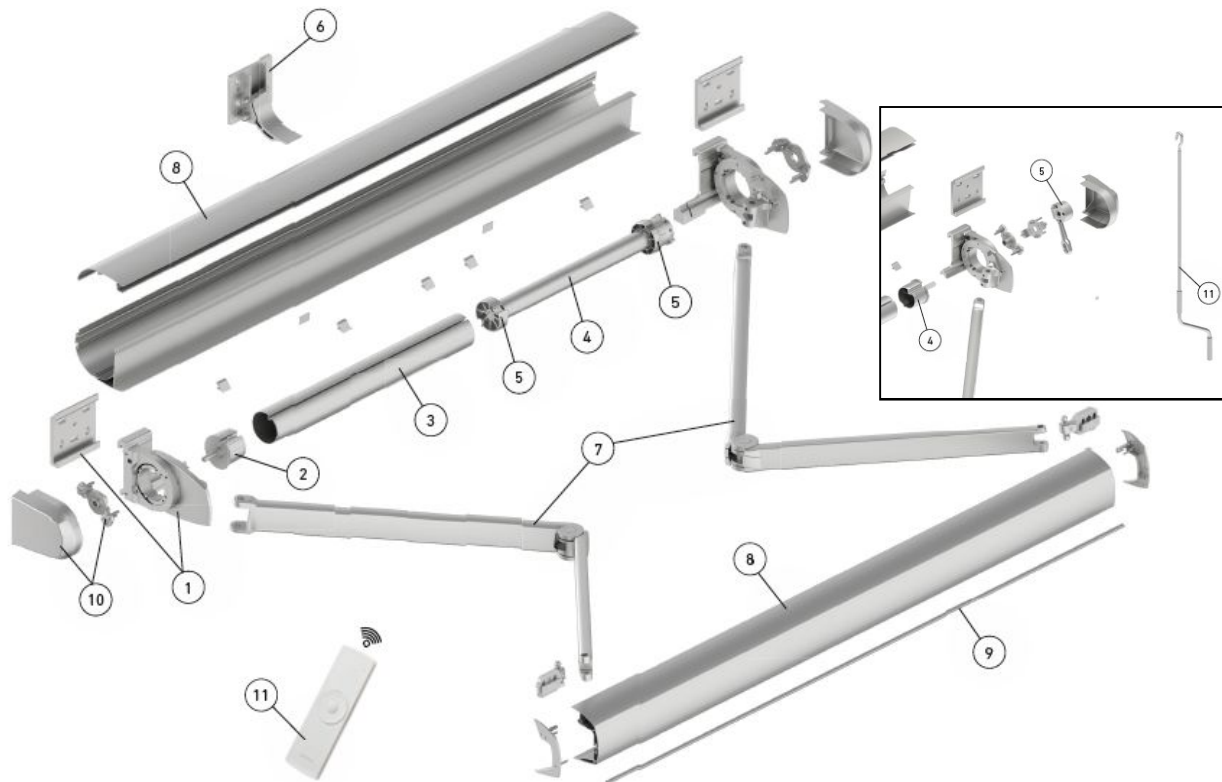
Options:

- *With or without flat hood*



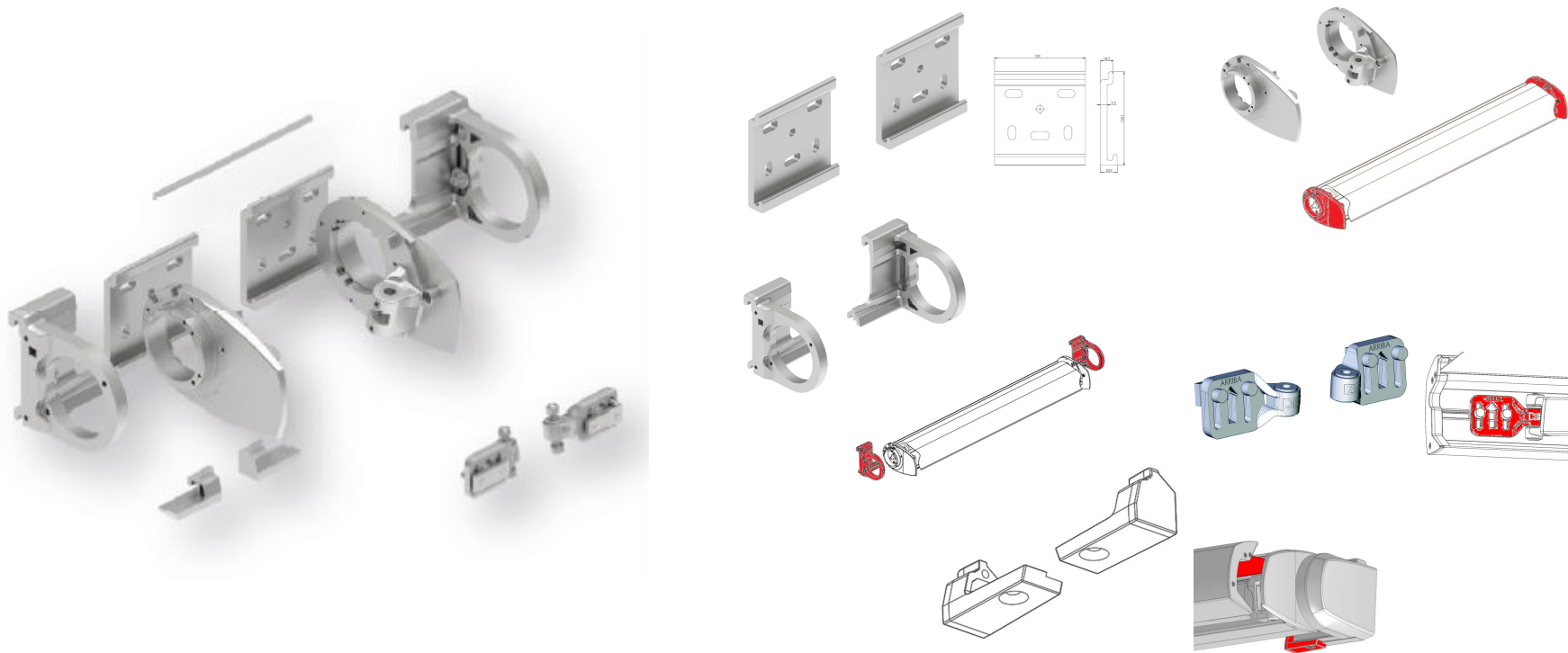
- *With or without valance*





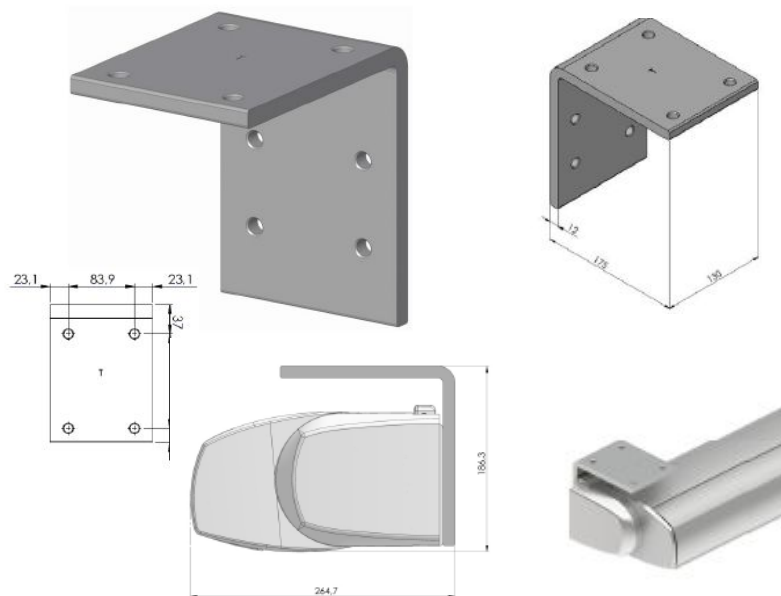
1. *Ares box kit*
2. *Round cap 70 / 78*
3. *Round tube 70 / 78*
4. *Motor / Cap for gear*
5. *Motor adapters / Gel gear 1 / 11*
6. *Central support*
7. *Set of Premium arms*
8. *Set Ares box profiles*
9. *Ogive profile cover*
10. *Covers kit*
11. *Cross channel emitter / Handcrank*

1. Ares box kit

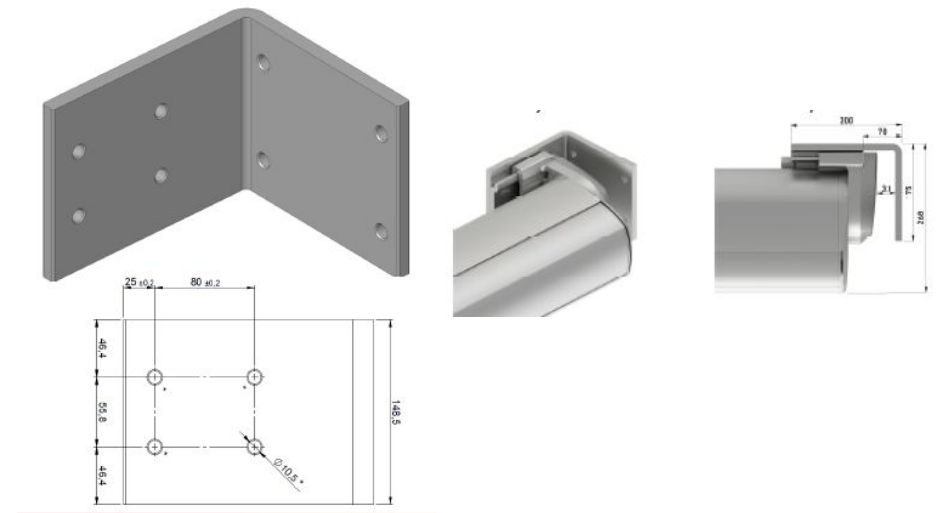


Optional:

Ceiling support

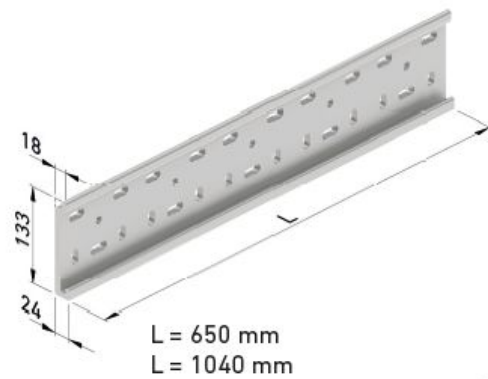


Support between walls

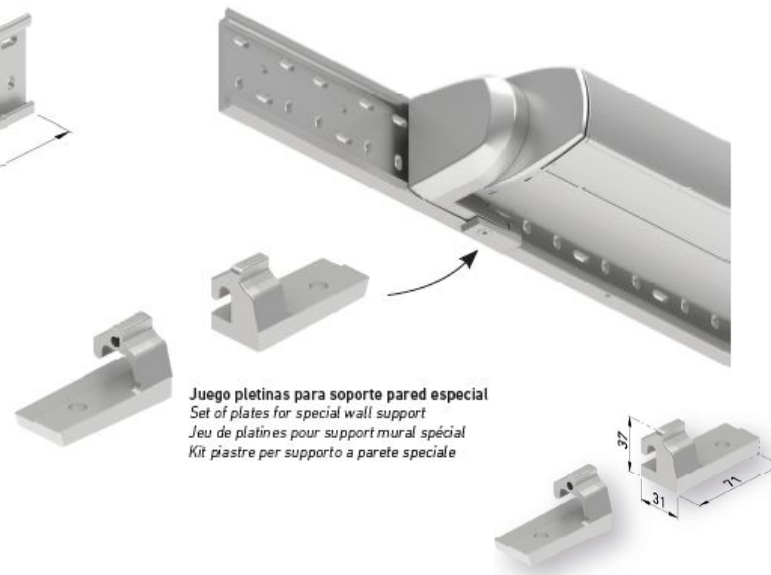


Optional:

Special wall support



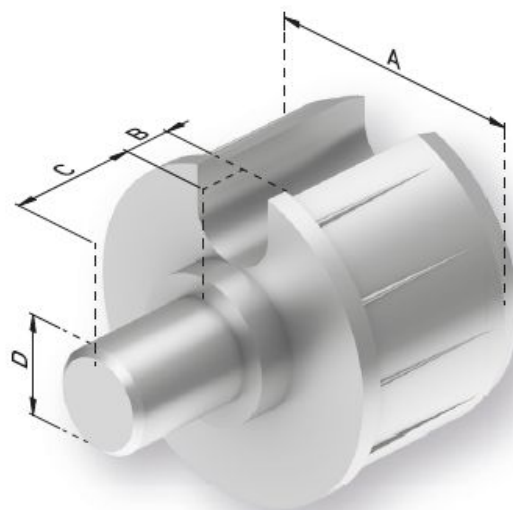
Plates for special wall support



Hood



2. Round cap 70 / 78



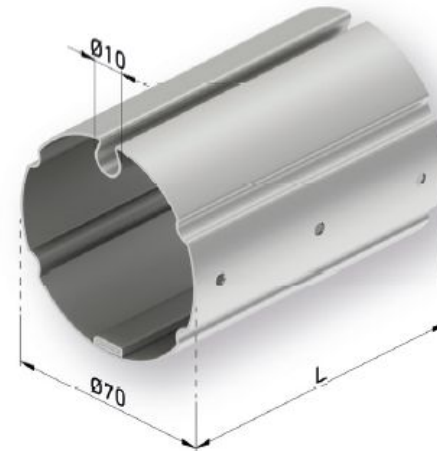
80020039 - A-70, B-7.5, C-40, D-12

80020044 - A-78, B-7.5, C-40, D-12

3. Round tube 70 / 78

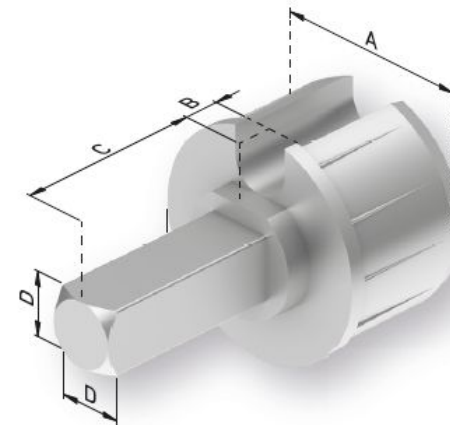
Recommended:

- TUBE 70x1: to 4X2,50 m
- TUBE 78x1 to 6x3 m



4. Motor/Cap for gear

80020033 - A-78, B-7.5, C-63, D-13



MOTOR

		Línea en metros • Line in meters Ligne en mètres • Larghezza in metri				
		2,00	3,00	4,00	5,00	6,00
Eje 70 mm Axis 70 mm Axe 70 mm Rullo 70 mm						
Salida en metros Arms projection in meters Projection en mètres Sporgenza in metri	1,50	30 Nm	30 Nm	30 Nm	30 Nm	30 Nm
	1,75		30 Nm	30 Nm	30 Nm	30 Nm
	2,00		40 Nm	40 Nm	40 Nm	40 Nm
	2,25		40 Nm	40 Nm	40 Nm	40 Nm
	2,50		40 Nm	40 Nm	40 Nm	40 Nm
	2,75			50 Nm	50 Nm	50 Nm
	3,00			50 Nm	50 Nm	50 Nm

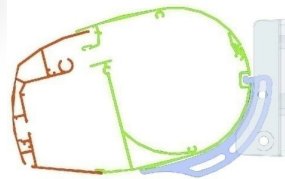
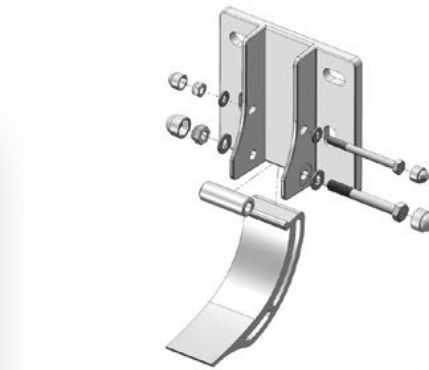
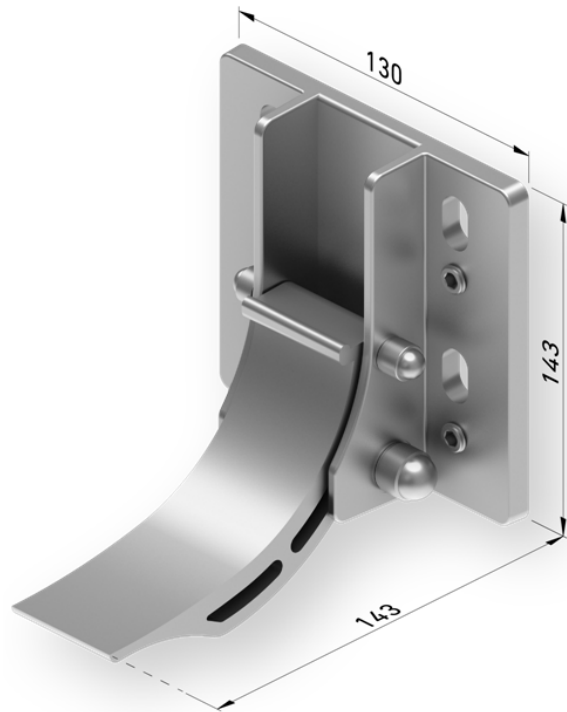
		Línea en metros • Line in meters Ligne en mètres • Larghezza in metri				
		2,00	3,00	4,00	5,00	6,00
Eje 78 mm Axis 78 mm Axe 78 mm Rullo 78 mm						
Salida en metros Arms projection in meters Projection en mètres Sporgenza in metri	1,50	30 Nm	30 Nm	30 Nm	30 Nm	30 Nm
	1,75		40 Nm	40 Nm	40 Nm	40 Nm
	2,00		40 Nm	40 Nm	40 Nm	40 Nm
	2,25		40 Nm	40 Nm	40 Nm	40 Nm
	2,50		50 Nm	50 Nm	50 Nm	50 Nm
	2,75			50 Nm	50 Nm	50 Nm
	3,00			50 Nm	50 Nm	50 Nm

5. Motor adapters/Gel gear 1/11

- Included in the kit, change motor adaptor by kit one for tube 78
- Gaviota kit 60070061 - is OK
- Fot tube 70 - use adaptors of each motor producer



6. Central support



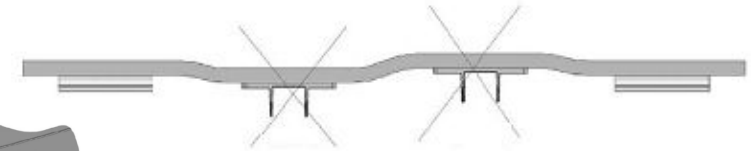
(Tornillo no suministrado)
(the screw is not supplied)

Referencia para
posicionar tornillo.
(Reference for inserting the screw)



References for aligning the pieces

OK



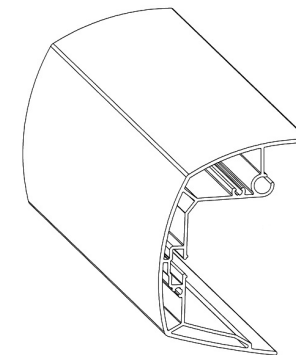
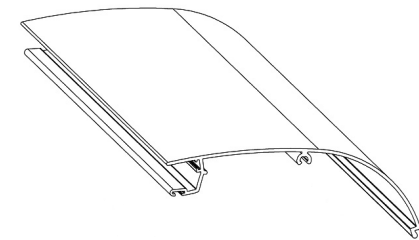
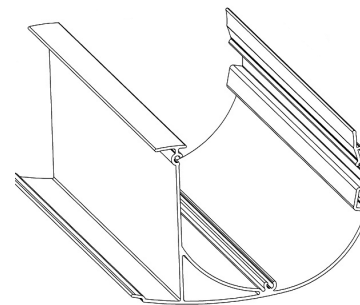
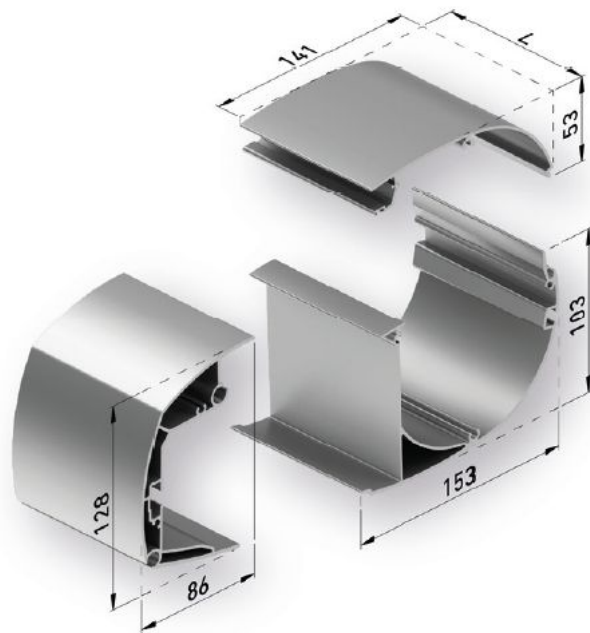
7. Set of Premium arms



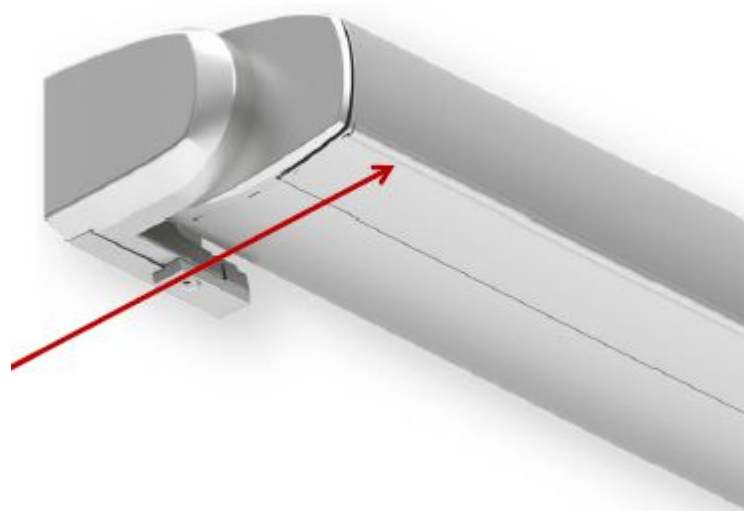
Fuerza de 2 Brazos Premium • Strength of 2 Premium Arms
Force de 2 bras Premium • Spinta di 2 bracci Premium

Salida • Projection <i>Ligne • Sporgenza</i> (m)	Fuerza • Strength <i>Force • Spinta</i> (Kg)	Fuerza 90° • 90° Strength <i>Force 90° • Spinta 90°</i> (Kg)
1,50	50,60	9,40
1,75	55,20	9,50
2,00	61,30	11,10
2,25	66,60	11,40
2,50	71,40	11,70
2,75	78,00	14,20
3,00	83,70	14,40

8. Set Ares box profiles



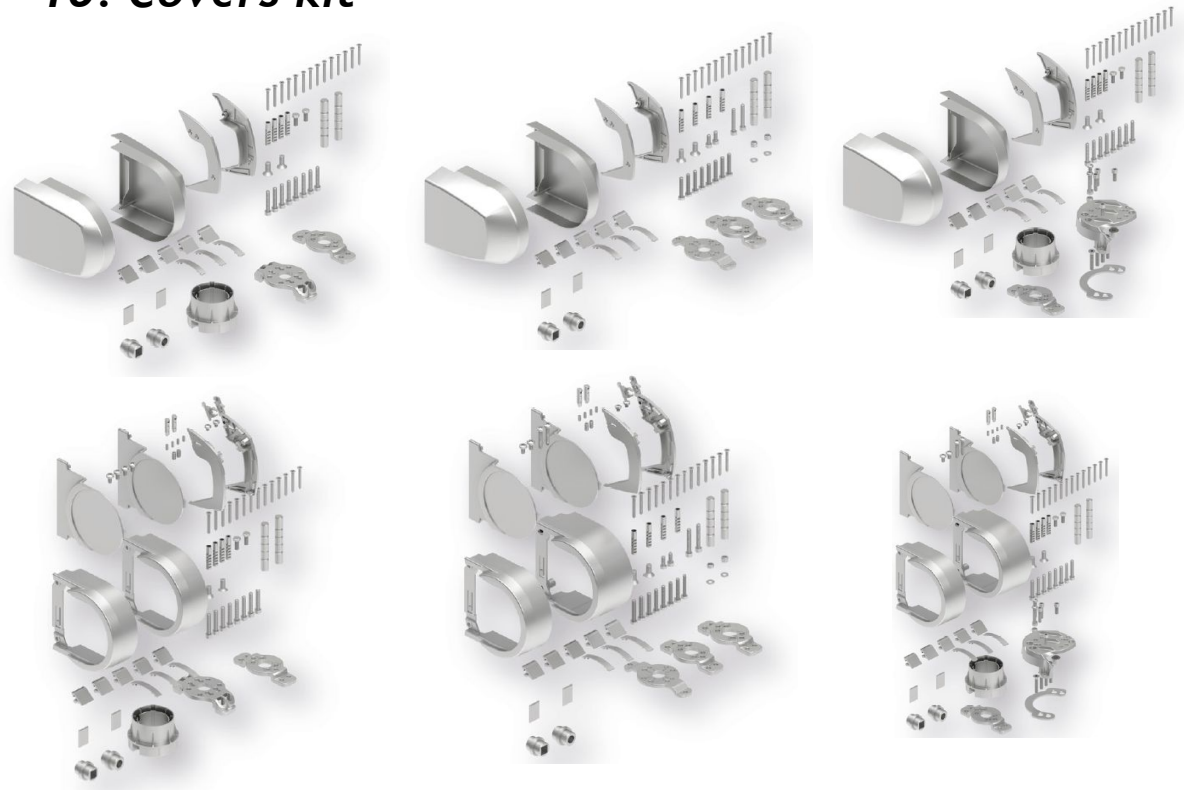
9. Ogive profile cover (Optional)



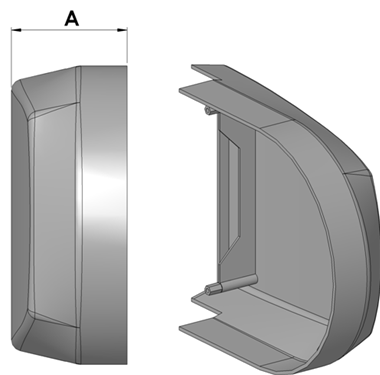
10. Covers kit

Options:

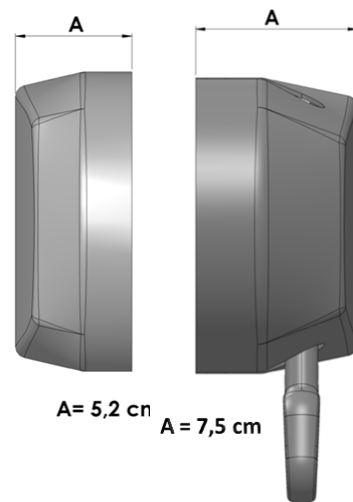
- *Plastic covers for motor*
- *Plastic covers for gear*
- *Aluminum covers for motor*
- *Aluminum covers for gear*
- *Plastic covers for motor manual override*
- *Aluminum covers for motor manual override*



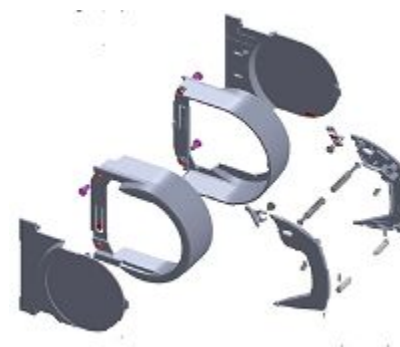
Plastic and aluminum caps



A= 5,2 cm

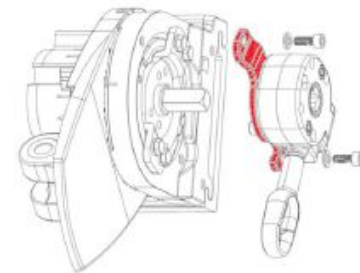
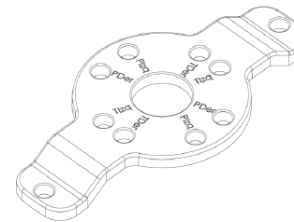
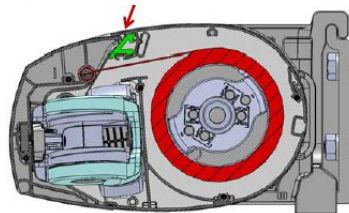
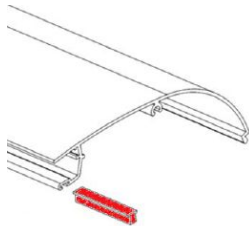
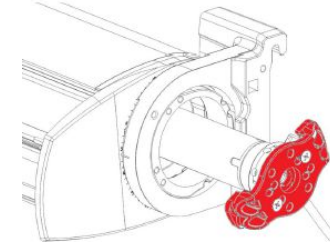
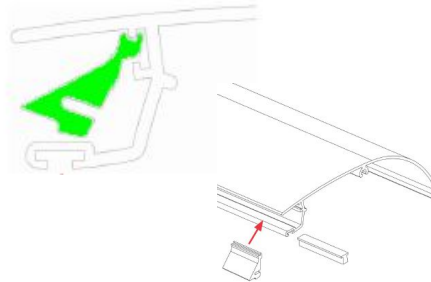
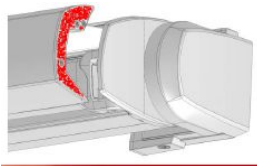
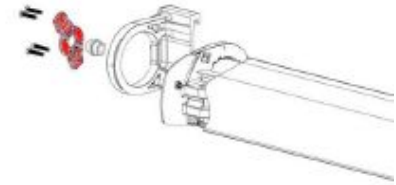
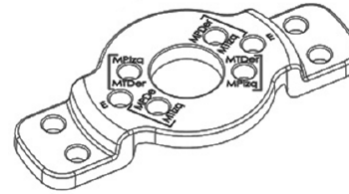
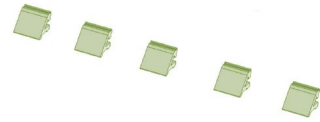


A= 5,2 cm
A = 7,5 cm



ARES

gaviota
Sun Life Specialist

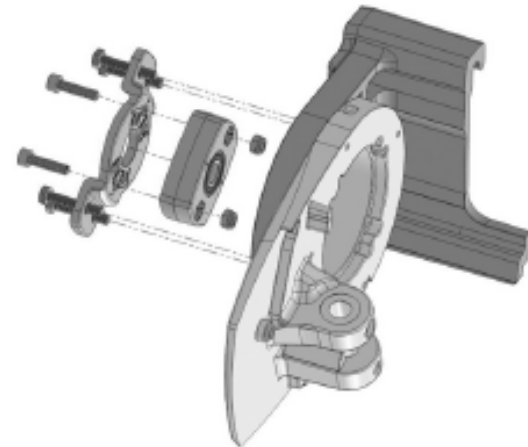


Optional:



*Instead of plastic bearing –
round pivot support with ball
bearing*

80020174



11. Cross channel emitter/Handcranck



Emisor 1 canal CROSS
CROSS 1 channel remote control



Emisor 15 canales CROSS
CROSS 15 channels remote control



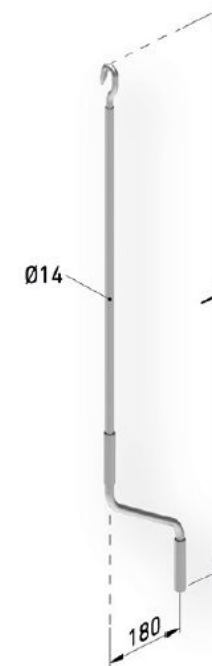
Emisor pared 1 canal CROSS
CROSS 1 channel wall transmitter



Emisor pared 15 canales CROSS
CROSS 15 channels wall transmitter



Central sol viento CROSS
CROSS sun and wind sensor



ARES

gaviota
Sun Life Specialist

ASSEMBLING AND INSTALLATION

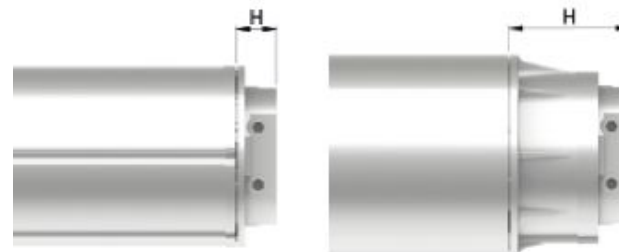
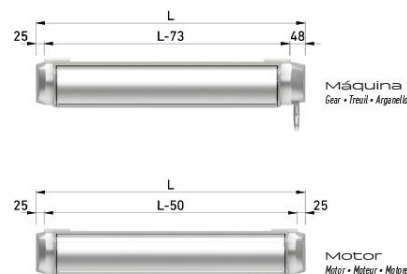


MINIMUM LINES

Salida brazo <i>Arms projection</i> <i>Sortie bras</i> <i>Sporgenza braccio smart</i> <i>(m)</i>	<i>Motor • Moteur • Motore</i>		<i>Máquina • Gear</i> <i>Treuil • Argano</i>	
	Plastico <i>Plastic</i> <i>Plastique</i> <i>Plastica</i>	Aluminio <i>Aluminum</i> <i>Aluminium</i> <i>Alluminio</i>	Plastico <i>Plastic</i> <i>Plastique</i> <i>Plastica</i>	Aluminio <i>Aluminum</i> <i>Aluminium</i> <i>Alluminio</i>
1.50	1.770		1.793	
1.75	2.022		2.045	
2.00	2.353		2.376	
2.25	2.604		2.627	
2.50	2.856		2.879	
2.75	3.188		3.211	
3.00	3.439		3.462	

CUTTING INDICATIONS

	Tapas Covers Couvercles Tappi	Distancia máxima entre placas pared Maximum distance between wall supports Distance maximum entre plaques à mur Distanza massima tra piastre e parete	Corte de perfiles Cutting the profiles Coupage de profils Taglio dei profili	Corte de eje Cutting the tube Coupage de l'axe Taglio del rullo	Corte de lona Cutting the fabric Coupage de la toile Taglio del tessuto	Márgenes de enroll Rolling margins Marges d'enroulement Margini di arrotolamento		
Motor Motor Moteur Motore	Plástico • Plastic Plastique • Plastica	L - 50	L - 138	Ø70	L - 83 - H	L - 154	Ø70	8'
	Aluminio • Aluminum Aluminium • Alluminio	L-48	L-136	Ø78		L-152	Ø78	
				Ø70	Ø70			
				Ø78	Ø78			
Máquina Gear Trevil Argano	Plástico • Plastic Plastique • Plastica	L - 73	L - 161	L - 162	L - 177	Centrada Centred Centré Centrato		
	Aluminio • Aluminum Aluminium • Alluminio	L-69	L-156	L-158	L-173			

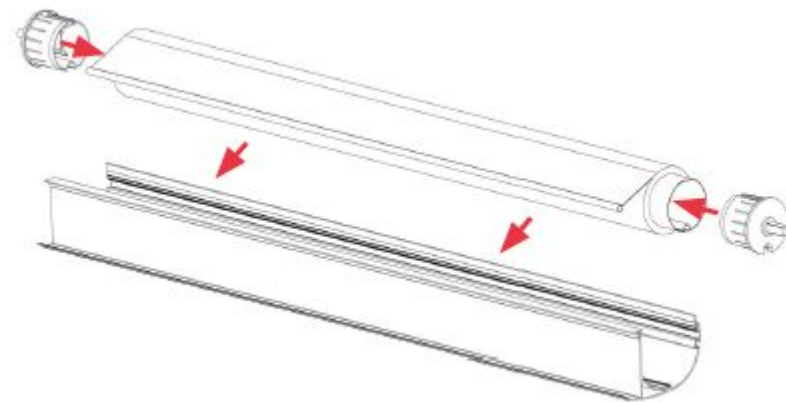


H - from seat side of the motor on the support to the seat side of the tube on the motor adapter.

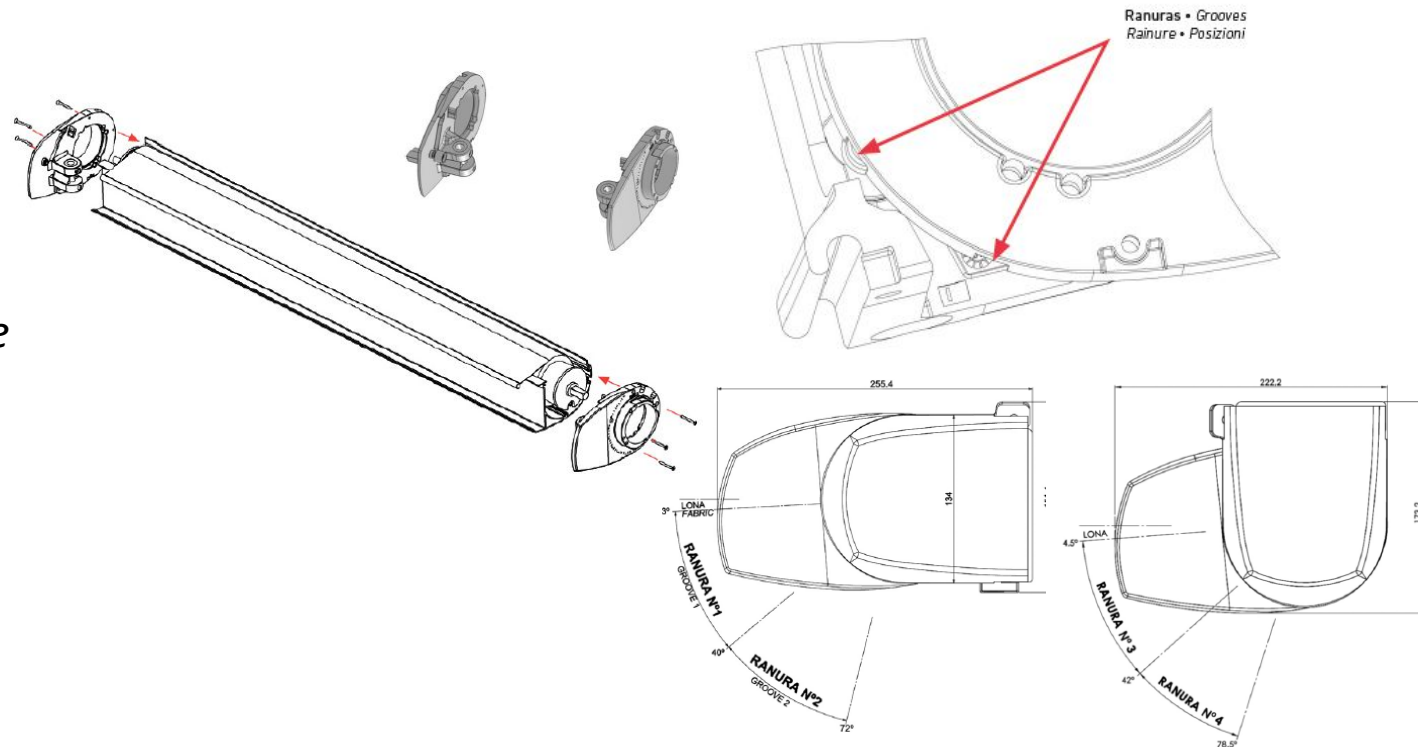
- Example: motor Cross Box 45 and adapter to tube 70, H=19 mm.

- Example: motor Cross Box 45 and adapter to tube 78, H=22 mm

- *Roll up the fabric staying centered at the tube.*
- *Introduce the caps into the tube and place it inside the box profile.*

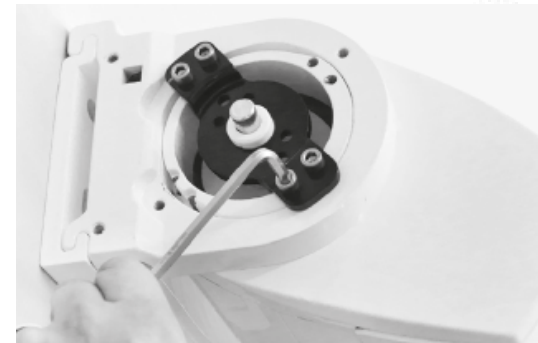
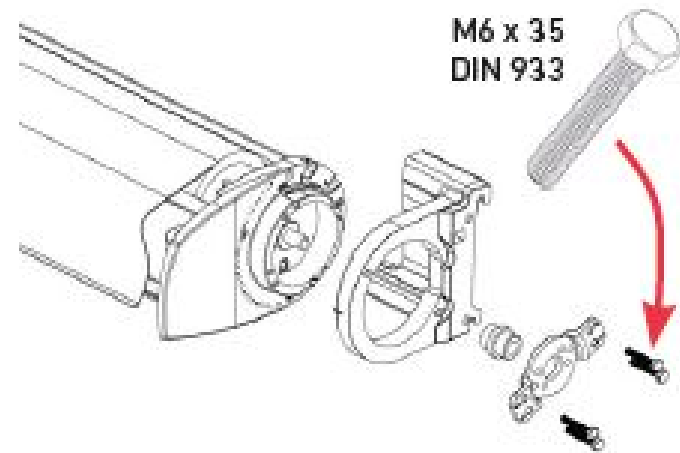


- *Screw the mobile supports to box profiles.*
- *Choose the groove according to the desired angle:*
 - *Wall option: grooves 1 and 2.*
 - *Ceiling option: grooves 3 and 4.*



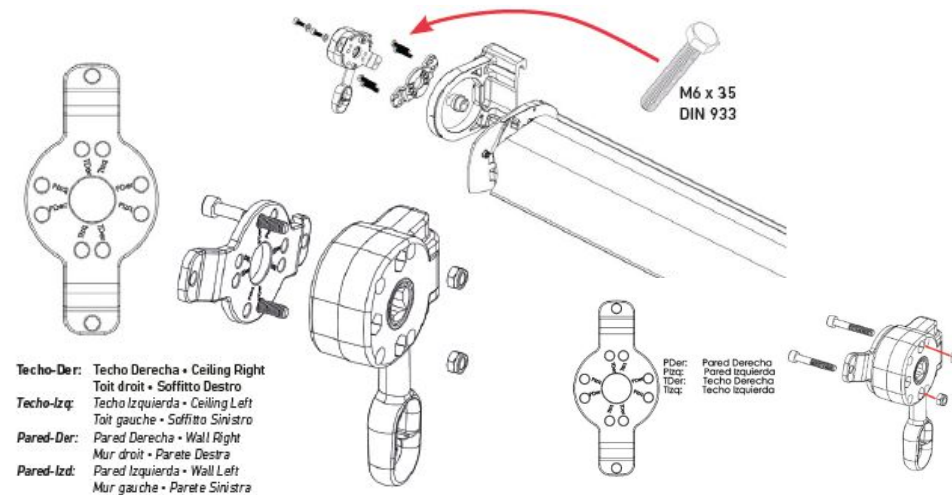
- *Place the pieces in the round pivot side of the tube following this order:*
 1. *Fixed support.*
 2. *Plastic bearing for round pivot.*
 3. *Motor/round pivot support (be careful with the position!)*

Put the M6 screws for fixing the pieces to the mobile support. Do not tighten.



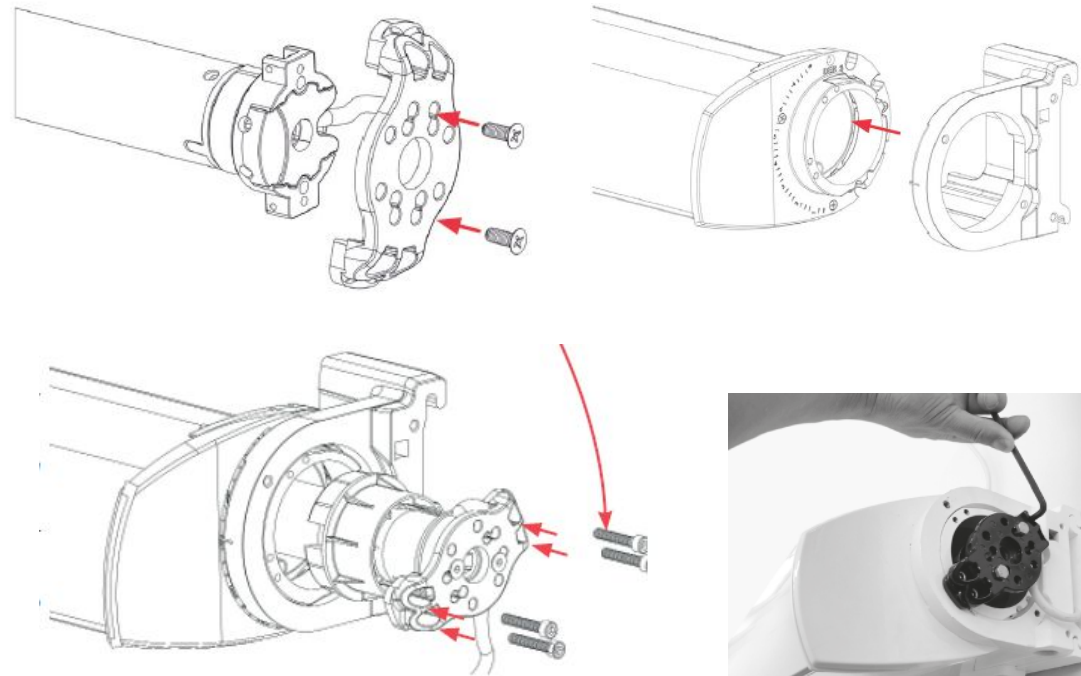
Gear version

- Place the pieces in the gear side of the tube:
 - Fixed support.
 - Plastic bearing for squared pivot.
 - Motor/round pivot support.
 Put the M6 screws for fixing the pieces to the mobile support. **Do not tighten.**
 - Screw down the gear at its support and later to the mobile support.



Motor version

- *Screw down the motor to the motor/round pivot support, assemble the fixed support with the mobile support and finally, introduce the motor/support set into the tube. Tighten then the three supports with the M6 screws.*



ARES

gaviota
Sun Life Specialist

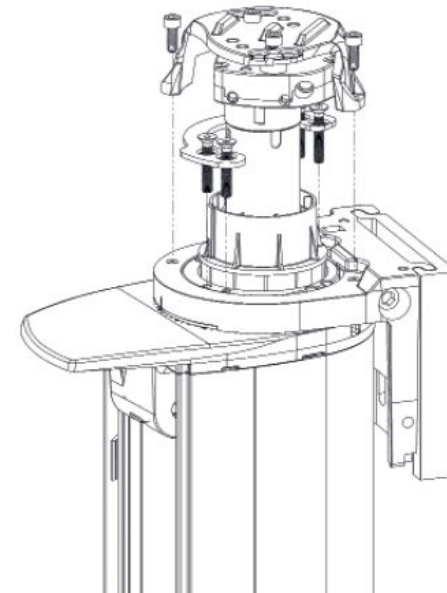
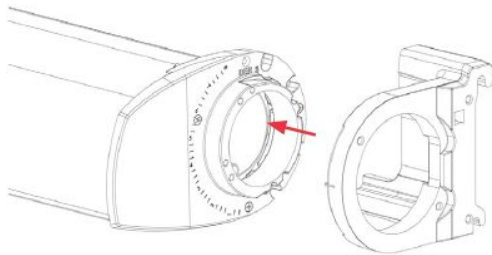
Motor manual override version

Soporte motor maniobra Socorro:

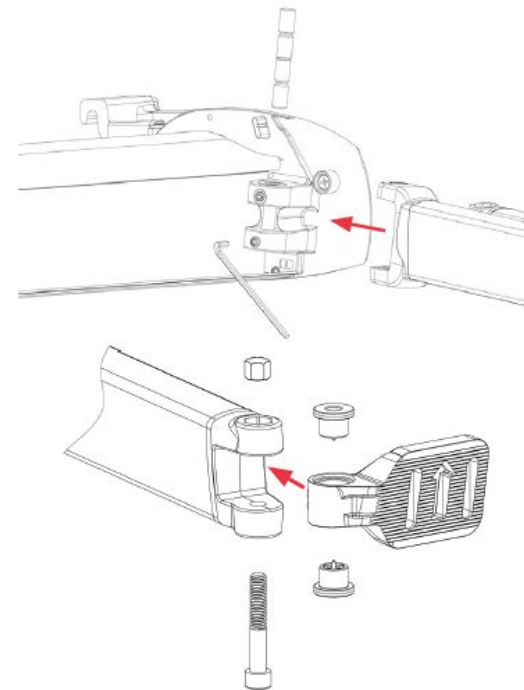
Motor support for manual override:

Support moteur manoeuvre Secours:

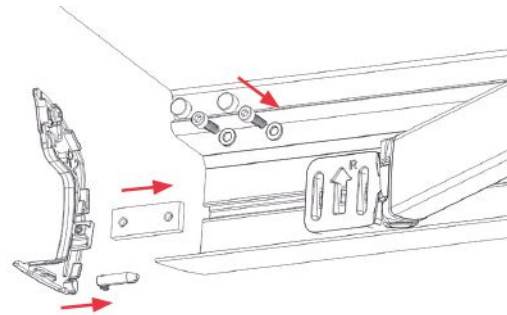
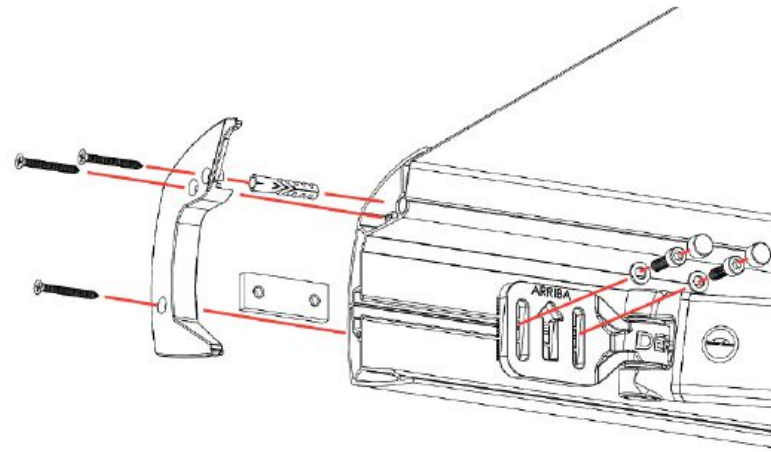
Supporto motore manovra di soccorso:



- *Assemble the Premium lateral arms.
Fit the arms at their place,
introduce the solid axles and
fix them with the lower
hexagonal socket set screws.
Place the adjustments in the
frontal profile.*

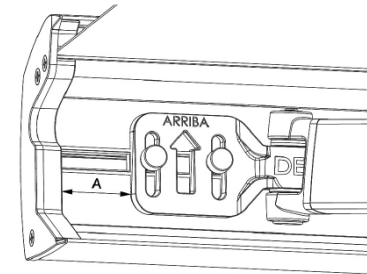


- *Introduce the fabric in the frontal profile and screw down the adjustments to it.*
- *Place the profile caps. Remove the security covers from the arms.*

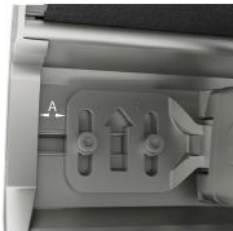


Position for placing the adjustments:

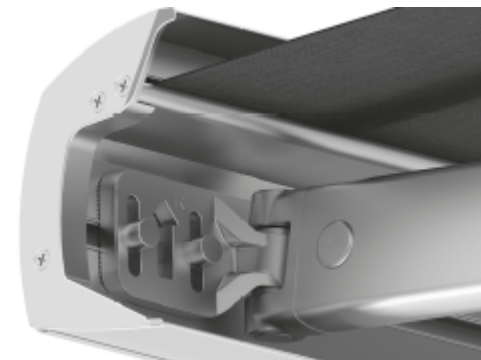
Medida de brazos (m) Arms projection (m) Mesures des bras (m) Sporgenza del braccio (m)	Distancia A • "A" distance Distance A • Distanza "A"	
	Plastico Plastic Plastique Plastica	Aluminio Aluminum Aluminium Alluminio
1.25	14	21
1.50		
1.75		
2.00	89	96
2.25		
2.50		
2.75	164	171
3.00		



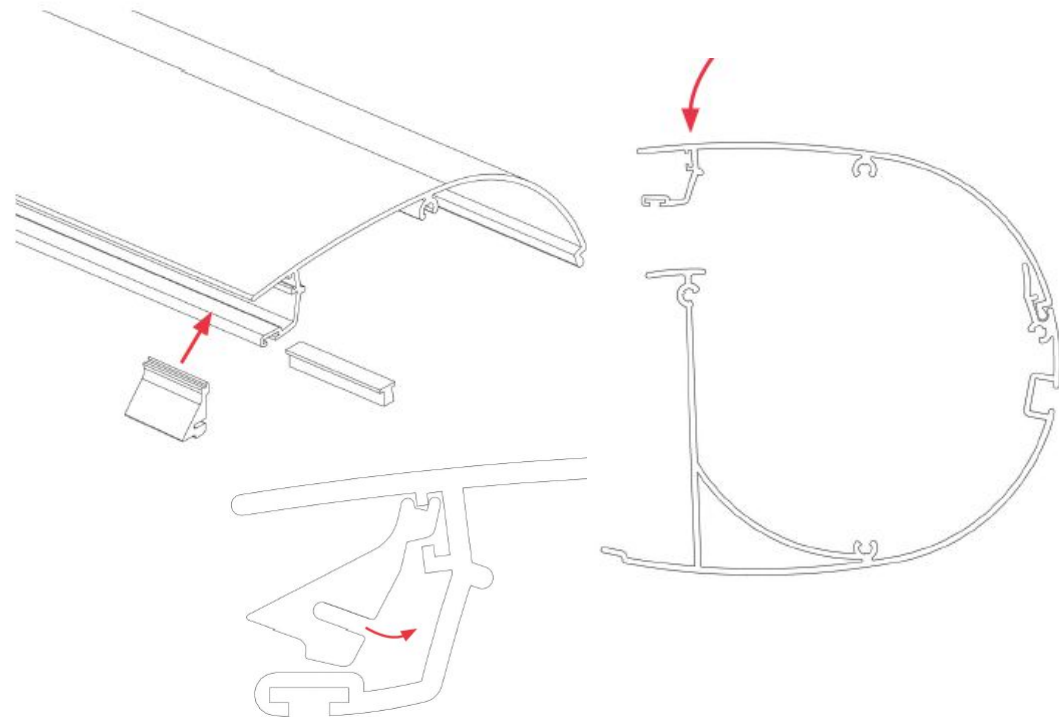
Tapas de plástico • Plastic covers
Couvercles plastique • Tappi plastica



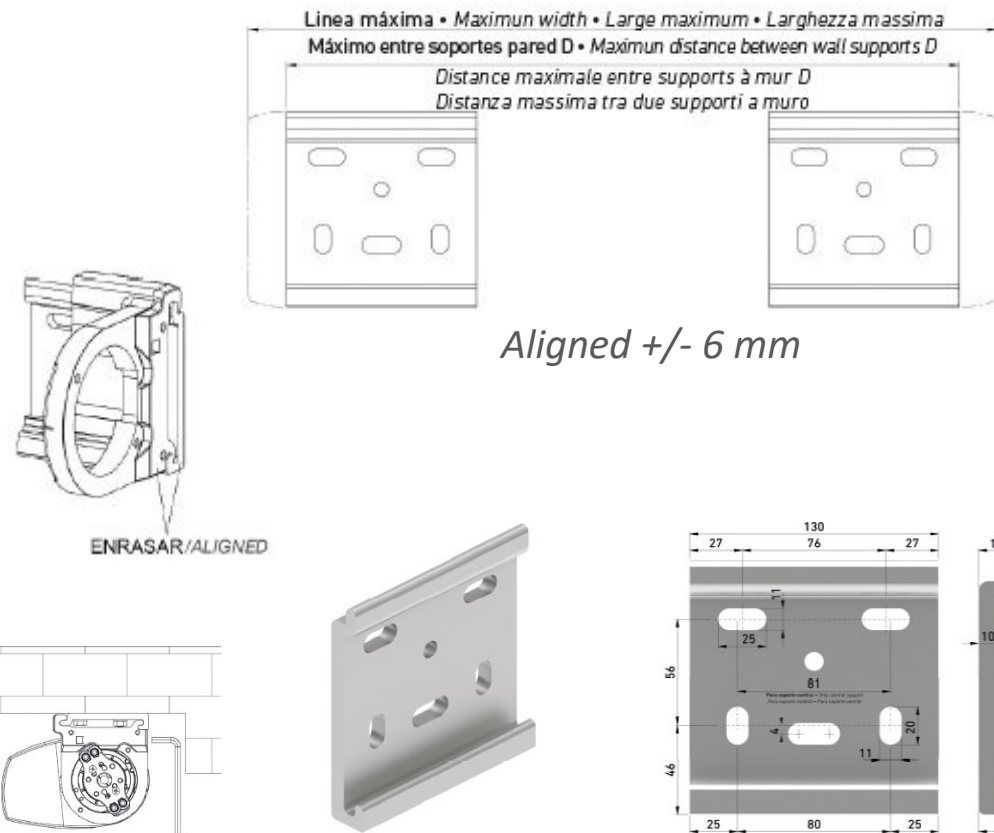
Tapas de aluminio • Aluminum covers
Couvercles aluminium • Tappi alluminio



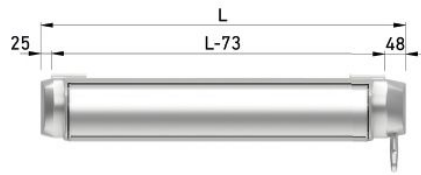
- *Place the elastic strap in the upper profile (cut the leftovers) and adjust in it the five wedges (equidistant between them).*
- *Introduce the upper profile tilting it until it fits.*



- *Place the supports at the wall.*
Attention: check the support placement measures at the cutting adjustments chart
The exterior sides of both supports must be facing the exterior sides of the fixed supports (+/- 6mm)
The plastic cap will have to be partially removed, in case the side of the wall support exceeds the side of the fixed support.
- *We recommend using 4 screws per each wall support.*

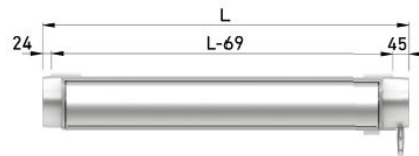


Tapas de plástico • Plastic covers
Couvercles plastique • Tappi plastica



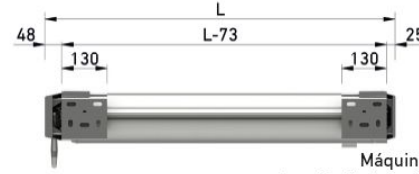
Máquina
Gear • Treuil • Arganello

Tapas de aluminio • Aluminum covers
Couvercles aluminium • Tappi alluminio



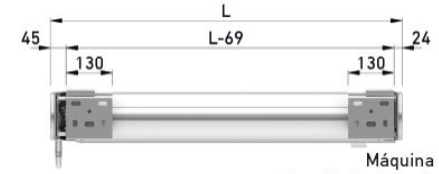
Máquina
Gear • Treuil • Arganello

Tapas de plástico • Plastic covers
Couvercles plastique • Tappi plastica

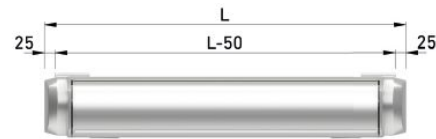


Máquina
Gear • Treuil • Arganello

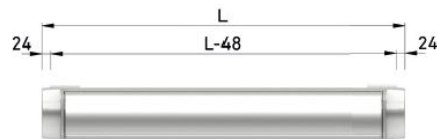
Tapas de aluminio • Aluminum covers
Couvercles aluminium • Tappi alluminio



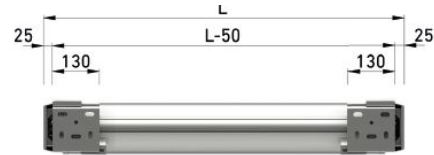
Máquina
Gear • Treuil • Arganello



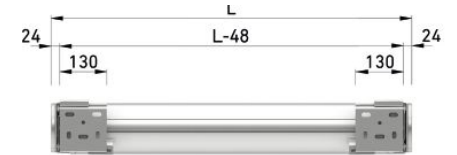
Motor
Motor • Moteur • Motore



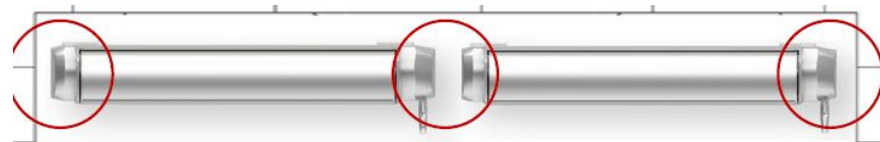
Motor
Motor • Moteur • Motore



Motor
Motor • Moteur • Motore

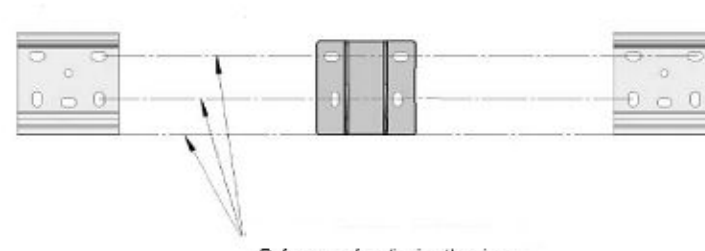


Motor
Motor • Moteur • Motore



ARES

gaviota
Sun Life Specialist

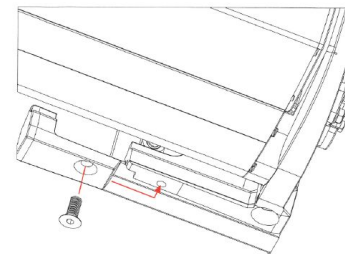


References for aligning the pieces

OK

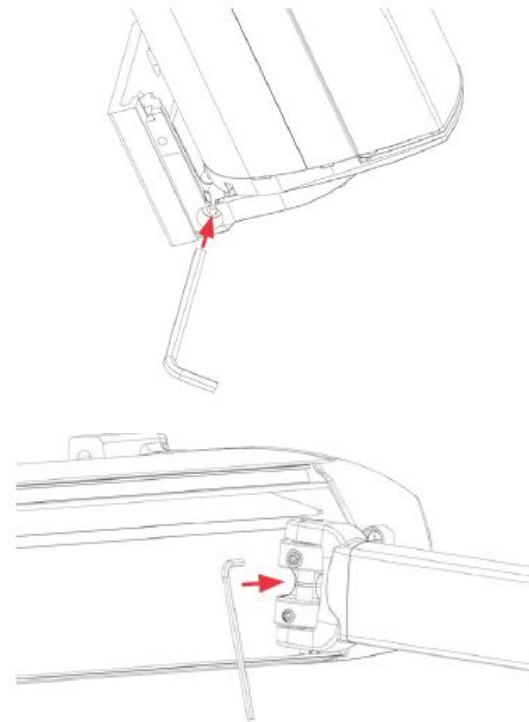


- *Place the box in the wall supports.*
- *Screw down the two brackets that fix the box*

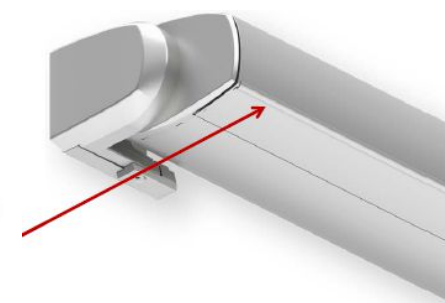
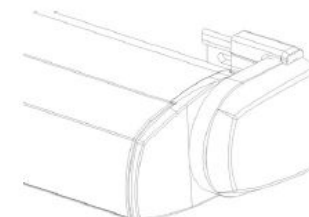
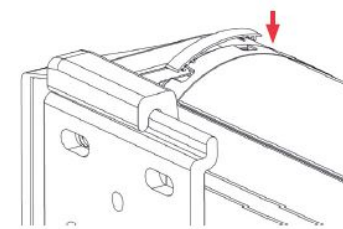
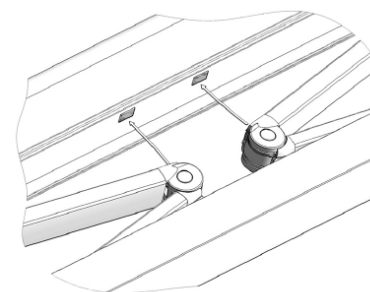
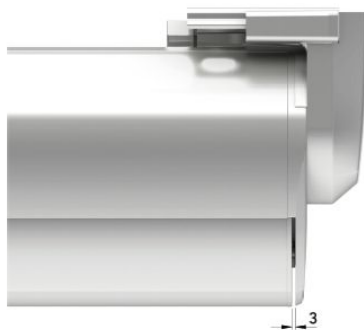


- *Adjust the box inclination, tightening then the two fixed supports (M6 screws).*
- *Adjust the elbow's height in order to have a perfect closing of the box*

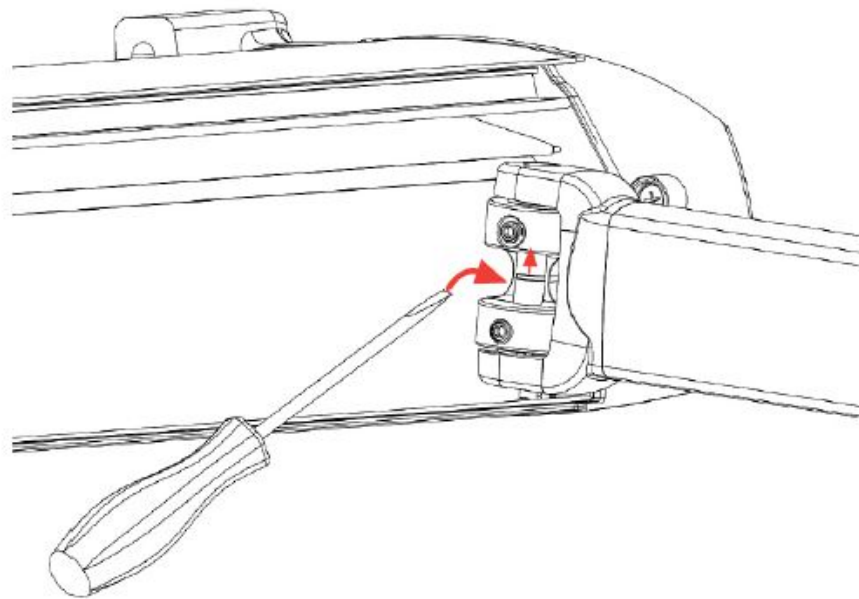
(in case a gear it is being used and before any adjustment, hold the arms with their security covers and roll down the fabric by using the gear).



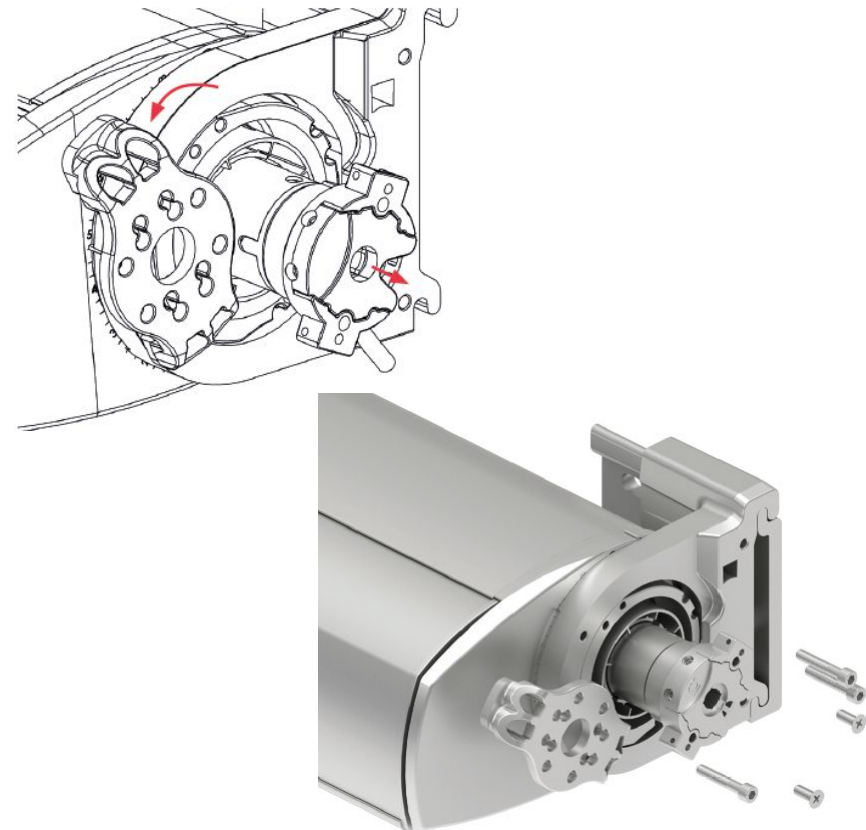
- *Place all the caps and transparent adhesives.*



Tube removal detail in case of taking arms apart



- *In case the motor has to be removed: hold the arms with their security covers (opening first the box as needed) and take away the screws that are fixing the motor.*
- *Remove then three screws of the motor support and leave one for safety reasons. Thus, the one remaining has to be not tighten in order to allow turning the support as needed for taking out the motor.*



ARES

gaviota
Sun Life Specialist





gaviota

Sun Life Specialist