

Awning minimum width depending on the supports position

How to read the manual

Table M: Awning minimum width depending on the supports position

Placement of supports depending on width and configuration																				
(m)	1			2			3			4			5				6			
	Lmin if X=166	Lmin if X=350	Y	Lmin if X=166	Lmin if X=350	Y	Lmin if X=166	Lmin if X=350	Y	Lmin if X=166	Lmin if X=350	Z	Lmin if X=166	Lmin if X=350	Y	Z	Lmin if X=166	Lmin if X=350	Y	Z
1.50	1.929	2.297	1.597	2.748	3.116	819	2.908	3.276		4.098	4.466		4.946	5.314	710		5.863	6.231	819	
1.75	2.181	2.549	1.849	3.125	3.493	944	3.285	3.653		4.602	4.970		5.450	5.818	710		6.618	6.986	944	
2.00	2.512	2.880	2.180	3.622	3.990	1.110	3.782	4.150		5.264	5.632		6.112	6.480	710		7.612	7.980	1.110	
2.25	2.763	3.131	2.431	3.999	4.367	1.236	4.159	4.527		5.767	6.135		6.614	6.982	710		8.366	8.734	1.236	
2.50	3.015	3.383	2.683	4.377	4.745	1.362	4.537	4.905	2.317	6.280	6.648	286	7.118	7.486	710	350	9.122	9.490	1.362	350
2.75	3.347	3.715	3.015	4.874	5.242	1.527	5.034	5.402		6.934	7.302		8.249	8.617	764		10.116	10.484	1.527	
3.00	3.596	3.964	3.264	5.251	5.619	1.653	5.411	5.779		7.436	7.804		8.878	9.246	827		10.871	11.239	1.653	
3.25	3.850	4.218	3.518	5.629	5.997	1.779	5.789	6.157		7.940	8.308		9.507	9.875	889		11.625	11.993	1.779	
3.50	4.101	4.469	3.769	6.006	6.374	1.905	6.166	6.534		8.443	8.811		10.136	10.504	952		12.380	12.748	1.905	

X - minimum 166mm and maximum 350mm

X = Distance of support A to the sides

Y and Z - always fixed as per table

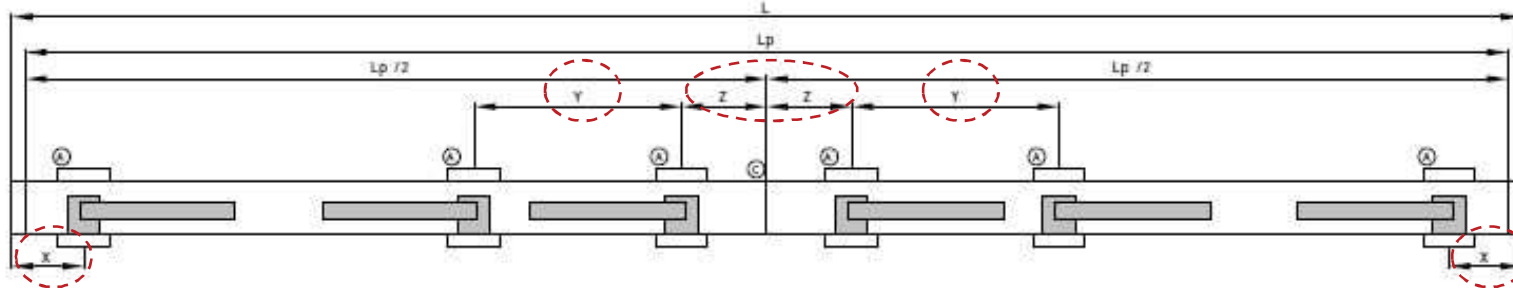
Z = Distance of support A to interior

Y = Distance between supports with arms facing each other

Depending on X and arm projection, the minimum awning width is different

(m)	6			
	Lmin if X=166	Lmin if X=350	Y	Z
1.50	5.863	6.231	819	350
1.75	6.618	6.986	944	
2.00	7.612	7.980	1.110	
2.25	8.366	8.734	1.236	
2.50	9.122	9.490	1.362	
2.75	10.116	10.484	1.527	
3.00	10.871	11.239	1.653	
3.25	11.625	11.993	1.779	
3.50	12.380	12.748	1.905	

6



Placement of supports depending on width and configuration																				
(m)	1			2			3			4			5				6			
	Lmin if X=166	Lmin if X=350	Y	Lmin if X=166	Lmin if X=350	Y	Lmin if X=166	Lmin if X=350	Y	Lmin if X=166	Lmin if X=350	Z	Lmin if X=166	Lmin if X=350	Y	Z	Lmin if X=166	Lmin if X=350	Y	Z
1.50	1.929	2.297	1.597	2.748	3.116	819	2.908	3.276	2.317	4.098	4.466	286	4.946	5.314	710	350	5.863	6.231	819	350
1.75	2.181	2.549	1.849	3.125	3.493	944	3.285	3.653		4.602	4.970		5.450	5.818	710		6.618	6.986	944	
2.00	2.512	2.880	2.180	3.622	3.990	1.110	3.782	4.150		5.264	5.632		6.112	6.480	710		7.612	7.980	1.110	
2.25	2.763	3.131	2.431	3.999	4.367	1.236	4.159	4.527		5.767	6.135		6.614	6.982	710		8.366	8.734	1.236	
2.50	3.015	3.383	2.683	4.377	4.745	1.362	4.537	4.905		6.280	6.648		7.118	7.486	710		9.122	9.490	1.362	
2.75	3.347	3.715	3.015	4.874	5.242	1.527	5.034	5.402		6.934	7.302		8.249	8.617	764		10.116	10.484	1.527	
3.00	3.596	3.964	3.264	5.251	5.619	1.653	5.411	5.779		7.436	7.804		8.878	9.246	827		10.871	11.239	1.653	
3.25	3.850	4.218	3.518	5.629	5.997	1.779	5.789	6.157		7.940	8.308		9.507	9.875	889		11.625	11.993	1.779	
3.50	4.101	4.469	3.769	6.006	6.374	1.905	6.166	6.534	8.443	8.811	10.136	10.504	952	12.380	12.748	1.905				

