



SUNWORKER SOPAQUE

Blackout awning, the cost-effective alternative
to rolling shutters



DICKSON[®]
solar protection

SUNWORKER OPAQUE

BLACKOUT AWNING, THE COST-EFFECTIVE ALTERNATIVE TO ROLLING SHUTTERS

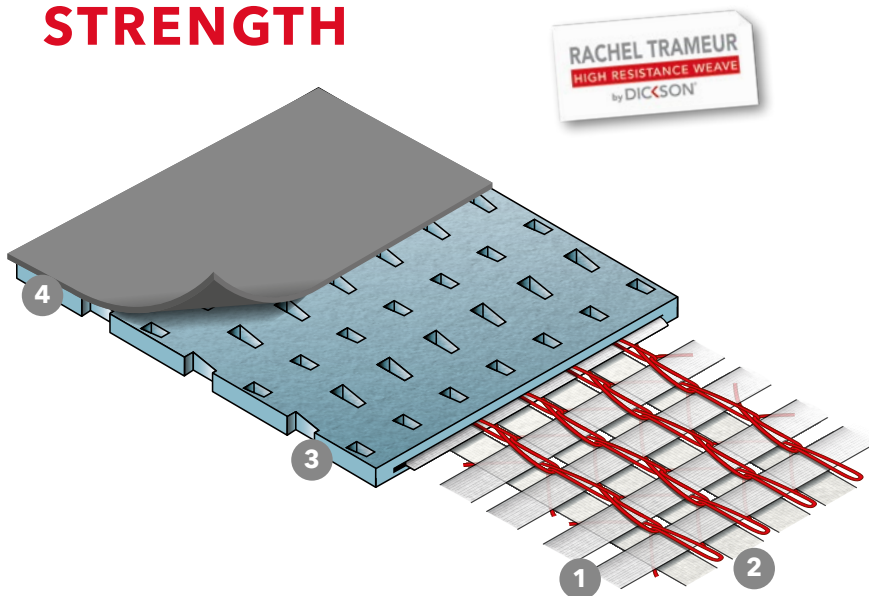
The SUNWORKER OPAQUE solar-protective fabric has a textile side and a blackout side and can block 100% of all UV rays and 100% of the sun's rays.

This opaque version of the SUNWORKER fabric boasts the same technical characteristics (mechanical resistance, fire-retardancy, ease of maintenance, thermal comfort) as well as being highly waterproof.

This fabric can be used both indoors and outdoors and offers an effective way of meeting the objectives laid down in the EU Directive on the Energy Performance of Buildings and is perfect for use in screening rooms, lounges, bedrooms, conference rooms, laboratories and other living spaces.



AN INNOVATIVE WEAVING TECHNIQUE FOR UNPARALLELED STRENGTH



- 1 Textile ply formed by weaving high-strength polyester yarn.
- 2 Binder yarn secures the textile ply but allows the threads to move independently of each other, thereby distributing and absorbing the mechanical energy in the event of tearing.
- 3 A special coating that protects colours from UV rays and inclement weather.
- 4 Waterproof blackout membrane.



SUNWORKER OPAQUE

5 GOOD REASONS TO CHOOSE A SUNWORKER OPAQUE FABRIC

1 VISUAL COMFORT

the textile solution adapted to your light-blocking needs

- An innovative alternative to traditional rolling shutters
- Flexible and modular: Sunworker Opaque can be combined with other products from the Sunworker range on a single awning to achieve varying degrees of openness

2 THERMAL COMFORT

excellent thermal performance

SUNWORKER OPAQUE acts as a thermal filter:

- Repels 100% of the sun's direct rays
- Improves the window's insulation
- Acts as a barrier to radiation from the window (minimizing cold gain in the winter and excessive heat gain in the summer)

3 AESTHETICS

preserves the building's aesthetics

A textile with a smooth, even texture that:

- Enhances the building's architectural design
- Offers architects and designers unlimited options when combined with other fabrics from the SUNWORKER range
- Can be printed with a design in order to customize your façade

4 MAXIMUM RESISTANCE AND SAFETY

a fabric that stands the test of time

The highest mechanical resistance on the market

- SUNWORKER OPAQUE fabric offers unparalleled strength thanks to the Rachel Trameur-type weave



- A special coating that protects colours from UV rays and inclement weather

- An opaque membrane that offers all the benefits of a composite material (impermeability, tear-resistance, ease of maintenance).

A fabric that can stand up to anything

- Naturally resists micro-organisms and mould
- A fully waterproof membrane, offering maximum protection against inclement weather

Maximum safety

- Guaranteed fire-retardant
- Certified by official accredited bodies

5 COST-EFFECTIVE

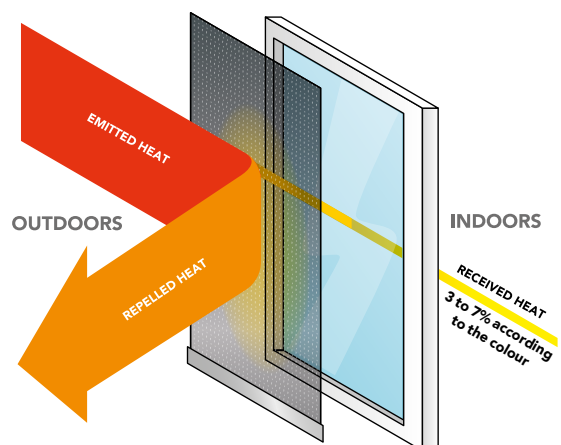
a thin and discreet fabric

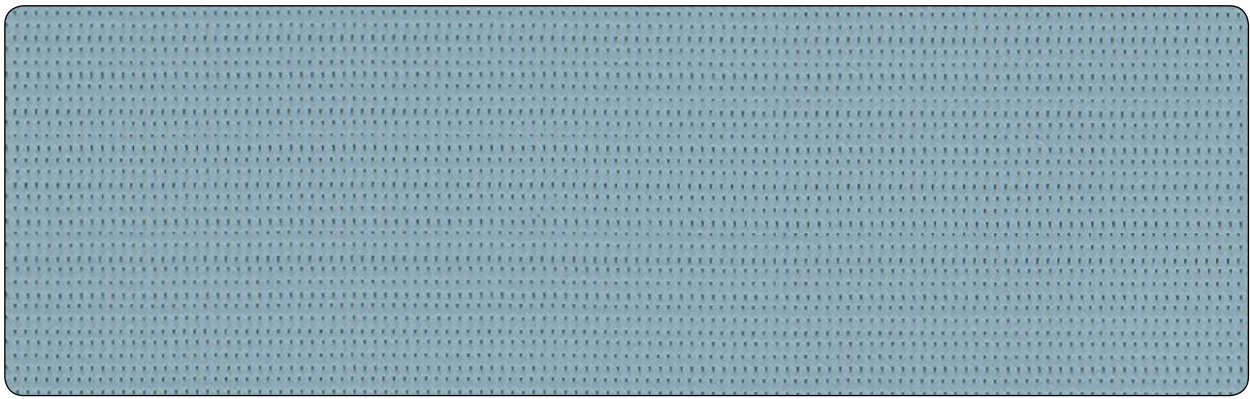
A thin, lightweight fabric that:

- Fosters ease-of-use
- Reduces investment costs by requiring a less bulky supporting framework

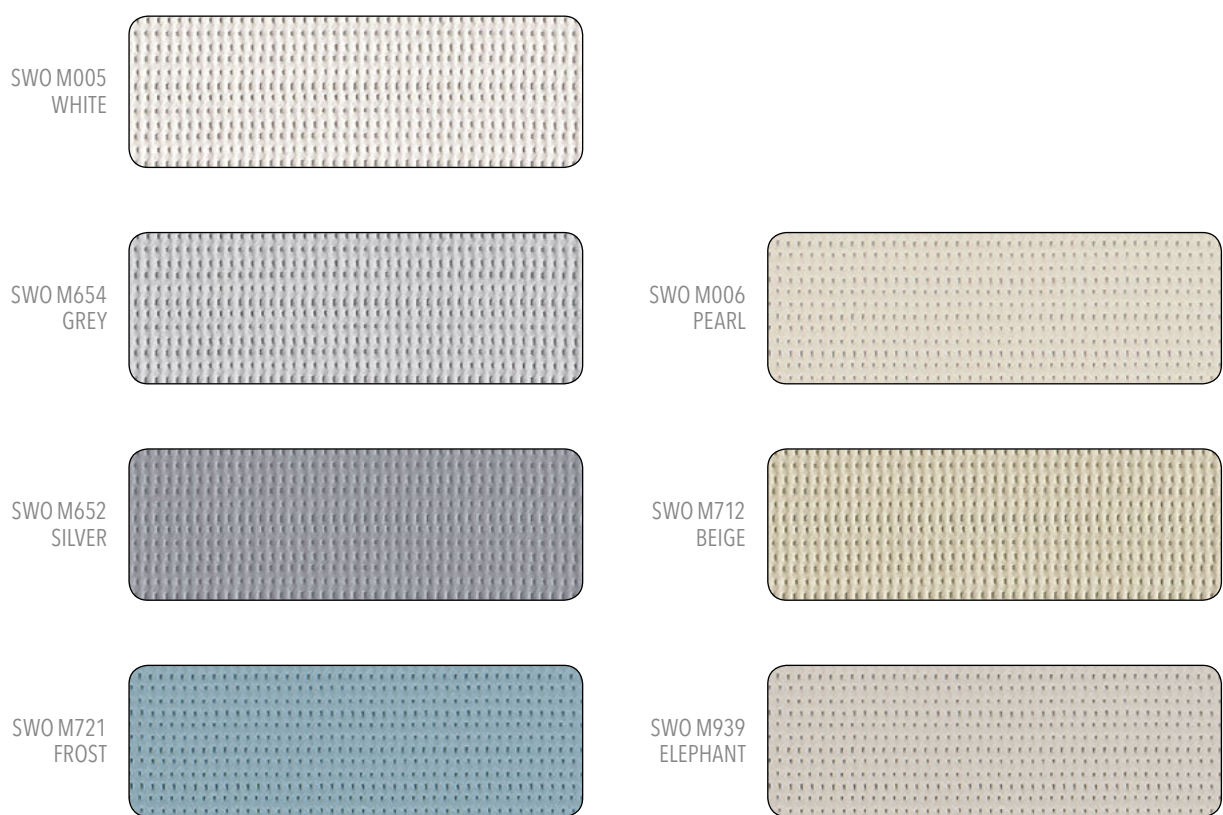
An **enhanced insulation effect** that cuts heating costs in the winter and air-conditioning expenses in the summer

A **significant improvement in the building's carbon footprint** throughout its lifetime





THE BLACKOUT MEMBRANE SIDE CAN FACE EITHER OUTWARDS OR INWARDS – SPECIFY YOUR PREFERENCE TO THE AWNING MANUFACTURER



THERMAL AND VISUAL PERFORMANCE

according to standards EN 410, EN 14500, EN 14501 and EN 13363-1

Colour no.	Solar factors		Energy efficiency			Visual performance			UV-blocking performance	Colour equivalents	
	g _{tot} * ext.	g _{tot} * int.	τ _e	ρ _e	α _e	τ _V	ρ _V	α _V	τ _{UV}	NCS	RAL
SWO M005	0,03	0,34	0,00	0,70	0,30	0,00	0,79	0,21	0,00	+/-S 0500-N	+/-9016
SWO M006	0,04	0,38	0,00	0,57	0,43	0,00	0,62	0,38	0,00	+/-S 1005-Y10R	+/-9002
SWO M652	0,07	0,49	0,00	0,25	0,75	0,00	0,28	0,72	0,00	+/-S4500-N	+/-7045
SWO M654	0,04	0,40	0,00	0,50	0,50	0,00	0,56	0,44	0,00	+/-S1500-N	+/-7047
SWO M712	0,04	0,40	0,00	0,52	0,48	0,00	0,57	0,43	0,00	+/-S2010-Y10R	+/- 7032
SWO M721	0,05	0,42	0,00	0,46	0,54	0,00	0,38	0,62	0,00	+/-S2020-B10G	+/-5024
SWO M939	0,06	0,46	0,00	0,34	0,66	0,00	0,37	0,63	0,00	+/-3005-Y20R	+/- 7030

τ_e : solar transmission - ρ_e : solar reflection - α_e : solar absorption - τ_V : visual transmission - ρ_V : visual reflection - α_V : visual absorption - τ_{UV} : UV transmission - *g_{tot} : solar factor for the combination of fabric + reference glazing C (double glazing 4+16+4 with low-emission layer on side 3, Argon filling; U=1.2 W/m²K; g=0.59).

The thermal and visual characteristics of our products are measured using standards EN 410, EN 14500, EN 14501 and EN 13363-1. As the quality of these measurements is critical to a project's success, measurements taken internally cannot be relied upon alone. Dickson therefore entrusts these measurements to an official accredited laboratory, CSTC/WTCB (Centre Scientifique et Technique de la Construction), which produces an independent report officially establishing the product's characteristics.

SUNWORKER RANGE

TOTAL FLEXIBILITY

Give your project a sense of consistency and harmony by mixing and matching the various finishes and coordinating colours.



SUNWORKER

Optimal visual and thermal comfort

SUNWORKER METAL

Enhanced thermal performance



SUNWORKER OPAQUE

Blackout awning, the cost-effective alternative to rolling shutters



SUNWORKER CRISTAL

The ultimate waterproof awning



SUNWORKER OPEN

Enhanced visual comfort allowing natural light to filter through

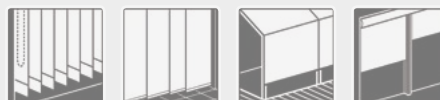


For the general terms of warranty, please see www.dickson-constant.com

Sunworker fabrics have a small carbon footprint and are Greenguard-certified, helping create a healthier and less polluting indoor environment. Installing a Sunworker fabric can consequently earn points towards green building certification.

SUNWORKER OPAQUE FABRIC THE PERFECT SOLUTION FOR ALL YOUR SHADING NEEDS

Can be used both indoors and outdoors, at temperatures ranging from -30°C to 70°C.



TECHNICAL SPECIFICATIONS

	Weight NF EN ISO 2286-1	Flame retardancy M1 (NF 92503) - B1 (DIN 4102)	Openness factor	Thickness NF EN ISO 2286-3	Tearing strength in daN/5cm DIN 53363	Tensile strength in daN/5cm NF EN ISO 13934-1	Width/roll length
SUNWORKER OPAQUE	510 g/m2	M1 - B1	0%	0,49mm	Warp69 Weft40	Warp245 Weft160	145cm/30m

These technical specifications are average values with a tolerance of +/- 5%. All the specifications featured in this brochure are for information only and do not constitute a guarantee. Their sole purpose is to provide a general description of the products. They may not be construed as a contractual commitment on our part. It is the customer's responsibility to check the validity of this information and the compliance of the merchandise received prior to installation, carrying out preliminary tests if necessary. It is also his/her responsibility to ensure that the selected product is suitable for its intended use. The customer is responsible for using the product under normal foreseeable conditions and in accordance with all safety and environmental regulations currently in force in the place of use as well as the professional standards of his/her sector. Dickson Constant reserves the right to withdraw from the market any of the products that feature in this brochure and/or to amend the related specifications.

SERVICES

- Personalized simulation of the thermal performances of your projects : prescription@dickson-constant.com
- Advisory service available to offer guidance and suggest the most appropriate solutions for your project, in line with your specifications : prescription@dickson-constant.com

10 rue des Châteaux
BP 109 - Z.I. La Pilaterie
59443 Wasquehal Cedex - France
www.dickson-constant.com
Tél. +33 (0)3 20 45 59 59
Fax +33 (0)3 20 45 59 00



Performance fabrics for
Solar protection
Outdoor furniture
Indoor furniture
Marine furnishing
Flooring

